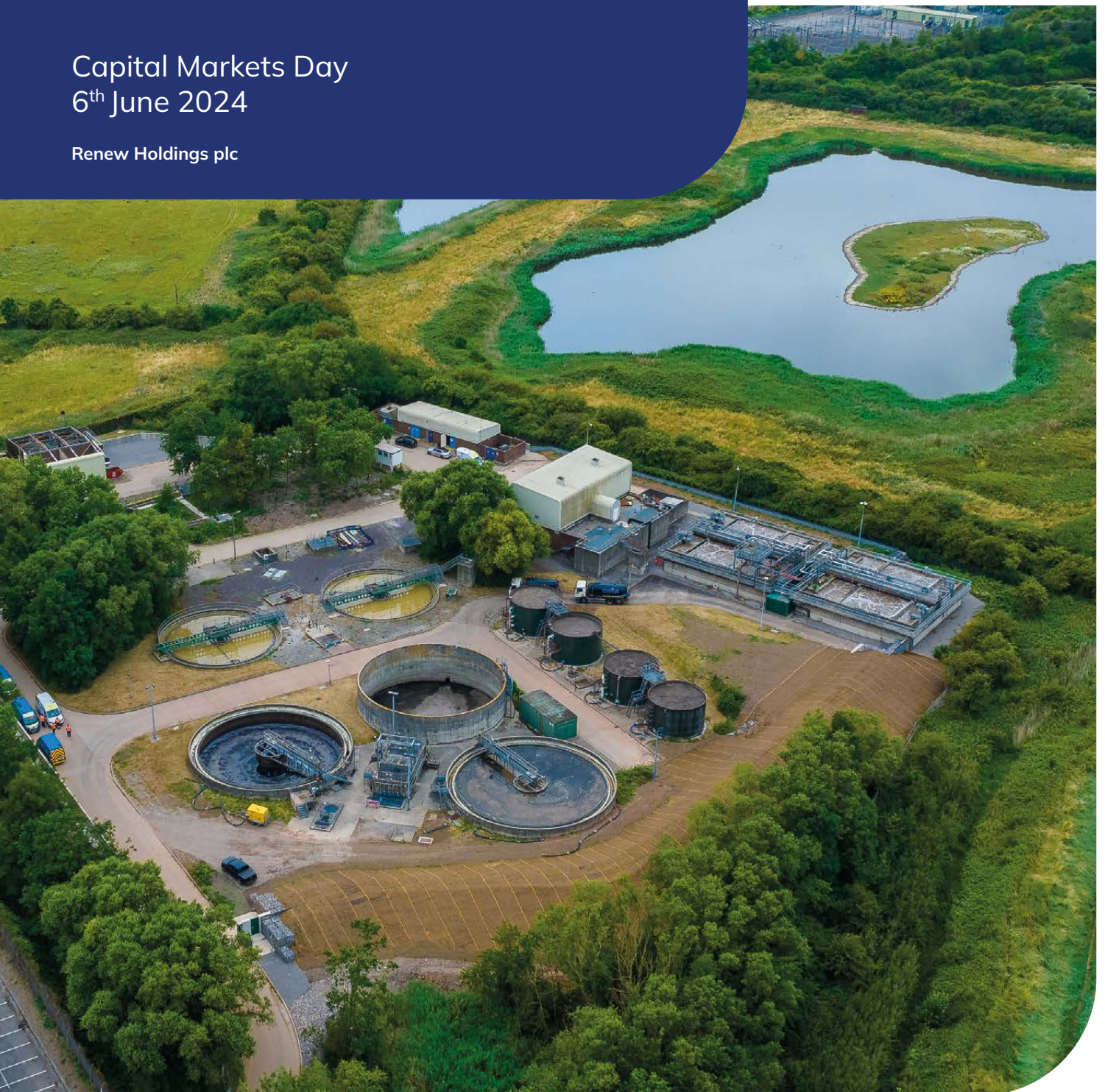


Engineering for a Better Tomorrow

Capital Markets Day
6th June 2024

Renew Holdings plc





QTS Group, Rench Farm, Drumclog

We are delighted to welcome you to Rench Farm for our Capital Markets Day 2024, Engineering for a Better Tomorrow.

The agenda for the day has been developed to provide an overview of our growth drivers in our engineering sectors, demonstrating why and how we provide support to critical infrastructure assets in regulated markets.

We will provide an update on progress in rail and our growth prospects as we move into the next control period. Our main focus will be our water businesses as they approach the new Asset Management Period, AMP 8. This market has significant growth potential with UK water companies proposing to invest up to £96bn¹³, a 90% increase from AMP7.

We look forward to demonstrating how our diverse operating model provides organic growth opportunities through increasing collaborative working between our brands. We bring innovation and new capabilities to our clients and provide new opportunities for our subsidiaries by adding scale to their offering.

All of our engineering subsidiaries are with us today and we welcome you to spend time getting to know how we deliver value by providing essential asset management and renewal services to our critical national infrastructure clients.

We hope that you find the day rewarding and that it provides you with key insights into how Renew is Engineering for a Better Tomorrow.



Programme for the day

Time	Event(s)
10:00am	Introduction and Group overview Rail in Renew Maintaining complex water infrastructure Collaboration – Driving growth Q&A
11:30am	Opportunity to visit our subsidiary business stands – throughout the day
12:00pm	Rail demonstration – Our rail innovation
12:30pm	Lunch
1:30pm	Water demonstration – Maintaining complex water infrastructure
2:45pm	Highways demonstration – Low-carbon drainage renewal
3:15pm	Travel to onward destinations

Strategic roadmap

Working together

We provide essential engineering services to maintain and renew critical infrastructure networks.



Our purpose

We provide essential engineering services to maintain and renew critical infrastructure networks. Our multidisciplinary engineering services are delivered through our independently branded subsidiary businesses that support the vital day-to-day running of these infrastructure networks.



Our vision

To safely and sustainably deliver these vital engineering services that improve the performance of these critical infrastructure assets. To deliver our priorities and to satisfy all our stakeholders in the execution of our strategy.

Our strategy

Our long-term strategy concentrates on developing our range of engineering service capabilities, both organically and by acquisition.



To be a key provider of engineering services in our target markets.



To focus on asset support, maintenance and renewals programmes with non-discretionary funding.



To expand our direct delivery model through strong local brands.



To establish long-term relationships through responsiveness to clients' needs.



To continue to deliver organic growth combined with selective complementary acquisitions.

Sustainability

We continue to deliver against our key sustainability commitment areas with responsibility and transparency at the heart of our approach.

Environment

Using technology and innovative working practices to reduce our carbon footprint.

Social

Building relationships with a wide range of local stakeholders including schools, communities and customers.

Governance

Acting responsibly to deliver sustainable value.

Delivering essential infrastructure services

Renew is a holding company which gives autonomy to its operating subsidiaries, enabling them to be competitive and effective in their individual markets whilst setting overall standards.

Our engineering subsidiaries



Engineering services

Rail

As the largest provider of infrastructure services to the rail network nationally, we support its day-to-day operations by providing a high volume of essential, non-discretionary asset maintenance activities. Through our long-term frameworks we deliver a range of services including civil asset management, fencing, devegetation, drainage and electrification services.

Infrastructure

We deliver specialist engineering services across the strategic highways network, predominantly to National Highways, through a number of asset delivery framework agreements. Services include infrastructure civils, specialist drainage, lighting and electricals. In Wireless Telecoms we undertake design, build and maintenance operations for all four of the largest mobile network operators.

We also provide airside aviation services to repair and renew airport pavement and infrastructure.

Energy

Our services are associated with high-hazard risk reduction operations and specialist mechanical and electrical engineering at nuclear facilities that include waste treatment, reprocessing, decommissioning and decontamination operations. We also provide long-term maintenance and asset renewal support to UK thermal power generation plants as well as electric vehicle charging infrastructure and Independent Connection Provider ("ICP") services.

Environmental

We support our water clients by directly delivering asset maintenance and renewals across water infrastructure networks including flood alleviation and river and coastal defence schemes. We also specialise in undertaking complex remediation and specialist restoration schemes for our clients.



Why invest in Renew?

Differentiated low-risk business model

- Our subsidiary businesses operate across a diversified range of markets.
- Critical asset maintenance and renewals services that are not dependent on large, capital-heavy contract awards, providing a lower risk profile.
- Supported by the commercial terms and short task execution periods within our frameworks, we continue to successfully manage the industry-wide material shortages and inflation challenges effectively.

Value-accretive model of compounding earnings

- Proven history of shareholder value creation through consistent execution of our strategy to deliver reliable capital growth.
- A track record of organic growth and M&A in high-margin, high-growth end markets, twinned with strong cash generation and shareholder returns.
- 17% CAGR (2011 – 2023)

Exposed to attractive long-term, non-discretionary structural growth drivers

- We operate in markets underpinned by resilient, long-term growth dynamics and committed regulatory spending periods, with maintenance and renewals expenditure continuing to increase.
- We deliver the day-to-day renewal and maintenance tasks required to keep critical networks operational.
- The UK Government reaffirmed its commitment to infrastructure with a £600bn¹ investment.

Market leading position, expertise and capabilities

- Our businesses work in markets with high barriers to entry which demand a highly skilled, experienced workforce and a proven track record of safe delivery.
- We continue to develop our range of specialist skills enabling us to provide a more efficient and valuable service to our clients.

Ideally poised to benefit from green infrastructure investment

- Our purpose-led ESG approach enables us to add value to our customers through investment in innovation and technology, assisting in the delivery of the UK's net-zero carbon target by 2050.

Strong long-term growth prospects

- The Group is committed to growing the business in its chosen markets both organically and through selective complementary acquisitions whilst maintaining a disciplined approach to capital allocation and risk.
- Track record of delivering consistent, sustainable growth across all our financial metrics.
- Leveraging collaboration between brands to drive innovation and opportunity.



Rail

As the largest provider of multidisciplinary maintenance and renewals engineering services to Network Rail, we support the day-to-day operation of the rail network nationally, directly delivering essential asset maintenance through our long-term framework agreements.

ARQ decarbonising the railway

Decarbonisation is a huge focus for the rail industry over the next 30 years, as the UK Government aims to remove all diesel-only trains by 2041.

Network Rail estimates that to decarbonise the UK rail network completely, 13,000 kilometres of track will need to be electrified by 2050 to achieve net zero.

The Electrification and Plant framework, including Overhead Line Electrification ("OLE") renewals, allows ARQ, a partnership between our AmcoGiffen, Rail Electrification Ltd ("REL") and QTS Group companies, to expand on the current scope of services that each business provides throughout the UK to Network Rail.

The utilisation of the ARQ partnership brings together the Group's skills in self-delivery of the broad scope of electrification and plant rail systems, including low and high-voltage power and OLE. ARQ will deliver operating efficiencies and innovation on behalf of Network Rail.

The framework will see ARQ deliver electrification and plant renewals across the region, creating opportunities within neighbouring communities and bringing a positive impact to the local economy.

ARQ operates on Network Rail's Electrification and Plant framework for CP7 across the Wales & Western region.

Railway Infrastructure

Capabilities

- Operational support and asset care
- Critical planned and reactive maintenance and renewals
- Civil, mechanical and electrical and minor signalling engineering services
- Geotechnical and earthworks
- Plant, power and signalling renewals
- 24/7 emergency provision
- Asset renewal and refurbishment
- Tunnel and shaft refurbishment
- Fencing and devegetation
- Multidisciplinary in-house design capability
- Electrification
- Stations and telecoms

Our markets

Network Rail invested £49.7bn² over Control Period 6 and has committed a further £45.4bn³ over Control Period 7 ("CP7"), which started in March 2024. Within this allocation the maintenance and renewal budget has increased by 9% from CP6, to £31.9bn³. The ORR has since proposed that Network Rail increase the amount it spends on renewal and maintenance of its core assets on the rail network by a further £600m over the Control Period⁴ which Renew will be well positioned to further benefit from. Following the publication of Network Rail's Strategic Business Plan, it's clear there is an emphasis on driving as much value out of investment as possible with a focus on "what customers and wider society value most".

Future focus

The compelling maintenance-focused structural growth drivers within this sector and Renew's high-quality engineering expertise leave the Group ideally positioned to deliver long-term, profitable growth in Rail. Within CP7, we have been successful in extending our positions within the recently awarded frameworks and expanded our position in a number of regions. We remain confident in continuing this trend as CP7 procurement continues. We see opportunities in electrification of the rail network that have been included as one of five CP7 objectives in Network Rail's SBP. Our three rail brands have formed a collaborative and unique position for Overhead Line Electrification delivery, and this will become an increasing strategic focus for the Group.

Network Rail made a

£45.4bn

investment in Control Period 7



Renewals and maintenance

£31.9bn

investment, a 9% increase on Control Period 6

Infrastructure

We deliver specialist engineering services across the strategic highways network, predominantly to National Highways, through a number of asset delivery framework agreements. Services include infrastructure civils, specialist drainage, lighting and electricals. We also undertake all aspects of wireless telecoms network infrastructure delivery.



Highways

Capabilities

- General civil engineering including structures and geotechnical schemes
- Installation and maintenance of roadside communication assets
- Repair, refurbish and install highway drainage networks
- Road lighting and technology installation including LED retro-fit
- A trusted supplier of road restraint systems
- Unique StoneMaster filter drain recycling process
- Drainage surveys including no-dig remediation
- SafetyCam fleet of mobile road worker protection vehicles

Our markets

As the UK Government's second Road Investment Strategy ("RIS2") comes towards a close, preparatory consultations for RIS3, which is scheduled to start in April 2025, have indicated it will focus on carbon reduction, with a notable shift away from new roads to maintenance, renewal and resilience of existing assets that will involve prioritising funding on structures, pavement and road restraints.⁵

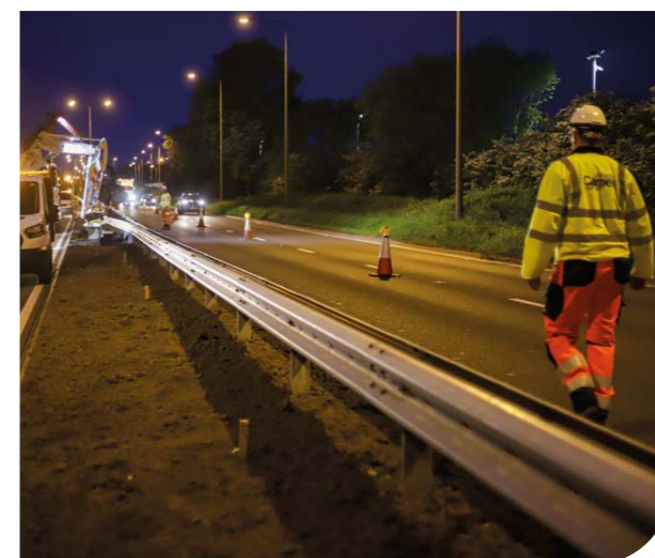
Future focus

The Government's prioritisation of critical maintenance and renewals programmes clearly plays to our strengths and uniquely positions us to deliver continued growth. Within RIS3 we expect the expansion of our AGC road restraint collaboration, the inclusion of the legacy concrete pavements programme in the Scheme Delivery Framework, and the acquisition of structures specialist Route One, to enable us to take further market share.

UK Network Operators plan a

£9bn

investment in the roll out of 5G



Wireless Telecoms

Capabilities

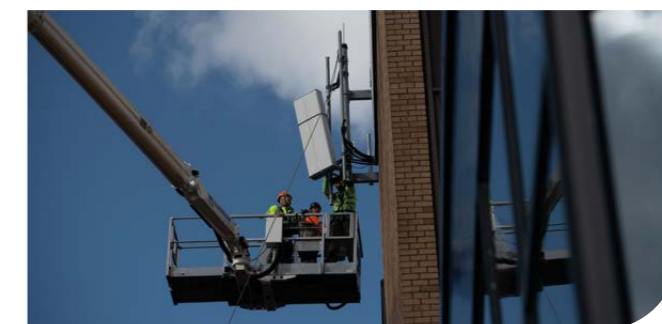
- Operational support and asset care
- Critical planned and reactive maintenance and renewals
- Acquisition, planning and design services
- Provision of 3G, 4G, 5G and Wi-Fi technologies
- Maintenance and decommissioning services
- Private 5G networks

Our markets

The nation's connectivity is becoming ever more critical in the digital age, and as a result the wireless telecoms sector contains many attractive growth drivers. The UK Network Operators plan a further £9bn investment in the roll out of 5G. In addition the Government is expanding the Shared Rural Network with a £1bn programme to extend 4G mobile coverage to 95% of the UK.⁶

Future focus

Continuing to establish ourselves as a trusted partner to the nation's network providers will leave the Group well placed to seize further growth opportunities in the future. Vodafone and 3UK have committed to spend £11bn on network upgrades by 2030 as part of their proposed merger.⁷



Aviation

Capabilities

- Airside operational support and asset care
- Critical planned and reactive maintenance and renewals
- Stand reconfiguration
- Airfield ground lighting installation
- Drainage and flood prevention

Future focus

We have seen demand for travel dramatically increase since 2022 noting that six of the eight largest airports in the UK have significant capacity expansion plans. Aviation continues to be an area of focus for the Group. We have recently secured a framework position at Leeds Bradford Airport to add to our existing frameworks with Manchester Airports Group ("MAG") where we provide air side renewals and maintenance at all three MAG airports.

Energy

Our services are associated with high-hazard risk reduction operations at nuclear facilities that include waste treatment, reprocessing, decommissioning and decontamination operations. We also provide long-term maintenance and renewal support to UK renewable energy sites and thermal power generation plants as well as electric vehicle charging infrastructure and Independent Connection Provider (“ICP”) services.

Sellafield support

Two Shepley Group companies have joined the Programme and Project Partners (“PPP”) at Sellafield to help deliver major projects on first-of-their-kind frameworks. As part of a group of four companies, Shepley and PPS Electrical will work alongside others on the HVAC, Mechanical & Pipework and Electrical & Instrumentation frameworks. We have already secured £50m of opportunities and are actively pursuing more.

PPP continue to work with key supply chain partners to agree key performance indicators that will benefit both the projects and the local community, with social impact commitments embedded into each framework.

We are also tendering for two separate £1bn lots on the Sellafield Decommissioning Nuclear Waste Partnership (“DNWP”), the successor framework to the Decommissioning Delivery Partnership. We continue to focus on developing our existing capabilities and are encouraged that there remain further growth opportunities at Sellafield, including additional new long-term frameworks.⁸

Nuclear

Capabilities

- Operational support and asset care
- Critical planned and reactive maintenance and renewals
- Civil, mechanical and electrical engineering
- Nuclear decommissioning and decontamination
- In-house specialist fabrication and manufacturing

Our markets

Having worked for over 75 years in civil nuclear, we provide a multidisciplinary service through our large complement of highly skilled employees who operate to demanding nuclear standards, including decontamination and decommissioning services, operational support and asset care, as well as waste retrieval in high-hazard areas such as legacy storage ponds and silos.

The decommissioning market is underpinned by the Nuclear Decommissioning Authority’s (“NDA”) spend for 2024 of £4bn, of which £2.8bn⁹ is directed at its Sellafield site in Cumbria where we remain a principal mechanical, electrical and instrumentation services contractor.

As a consequence of geopolitical tension and the need for energy security the Government has recently announced a £300m investment¹⁰ in the enrichment and manufacture of high-enrichment, low-assay nuclear fuel focused on the Springfields and Capenhurst nuclear facilities where we are growing our decommissioning, renewals and maintenance presence.

Future focus

While the work we do in this sector is predominantly focused on decommissioning and waste retrieval in high-hazard areas such as legacy storage ponds and silos, the budget from the UK Government announced earlier this year suggests that new nuclear will offer further growth opportunities in the future.

The UK Government has committed to achieving net zero emissions by 2050, and decarbonisation of our energy supply is a key step to achieving carbon neutrality. The Government is delivering a radical shift in the UK energy system towards cleaner, more affordable energy sources, of which new nuclear is an essential component. This is underpinned by the creation of Great British Nuclear and the Government’s target to commence construction of up to three new nuclear plants in the next ten years, a competition to build the UK’s first Small Modular Reactors and a £600m Nuclear Fusion Plant.¹¹ This provides long-term and sustainable demand for our specialist manufacturing capabilities in high-grade nuclear components which we are investing in and seeing record demand for.

Sellafield maintenance and decommissioning

£2.8bn

spent at the largest nuclear site in Europe

An investment of

£300m

of high-enrichment, low-assay nuclear fuel



Thermal Power, Renewables, EV, Networks Transmission and Distribution

Capabilities

- Operational support and asset care
- Critical planned and reactive maintenance and renewals
- Civil, mechanical and electrical engineering

Our markets

Current public charging points throughout the UK need to grow by a factor of 5 by 2030 to meet the Government’s ambition. To support the need to accelerate the infrastructure required, it is investing £950m¹² to prime further investment from industry to develop high-powered charging on the strategic highway network.



Environmental

We support our water clients by directly delivering asset maintenance and renewals across water infrastructure networks including flood alleviation and river and coastal defence schemes. We also specialise in undertaking complex remediation and specialist restoration schemes for our clients.

Working collaboratively in Water

In April 2024, through its strategic delivery appointment on the AMP7 Capital Delivery framework, Envolve teamed up with Wessex Water to deliver process improvements to meet regulatory obligations during the AMP 7 Environment Agency Water Industry National Environment Programme at Palmersford Water Recycling Centre.

Alongside Wessex Water, Envolve is upgrading and modifying the existing water recycling centre to create a more resilient and sustainable treatment process whilst reducing phosphorus levels in our rivers and seas.

Working in a live water treatment centre requires meticulous co-ordination between Envolve, Wessex Water and the Environment Agency to ensure minimal disruption to normal operations, ensuring the treatment centre continues to operate throughout the project.

This project is an example of the positive impact working together can have on the environment and our communities.

Water including Flood and Coastal

Capabilities

- Operational support and asset care
- Critical planned and reactive maintenance and renewals
- 24/7 emergency reactive works including flood risk management programmes
- Maintenance of strategic water mains and mains drainage
- Clean and wastewater rehabilitation infrastructure
- Dam safety and pressurised pipeline specialisms
- Port, harbour and sea defences

Our markets

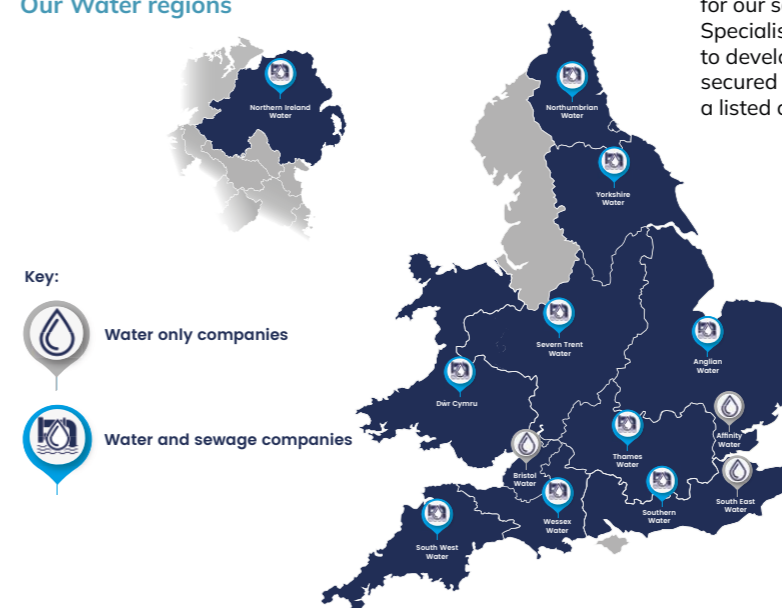
The UK's water companies, through their latest AMP8 business plans, are proposing to almost double their spending up to £96bn over the next five-year control period compared with forecast spend in AMP7, a 90% increase.¹³

Changing weather conditions continue to highlight the need for investment in flood defences and we see an increasing focus on climate and weather resilience. The UK Government has committed £5.2bn from 2021–2027 to improve flood defence infrastructure.¹⁴ As part of this, we were recently awarded four lots on the Environment Agency's new asset operation, maintenance and response framework, further consolidating our position as a leading engineering provider in this sector.

Future focus

The Group continues to expand its capabilities in Water and to grow in the sector. With a strengthened position in the market, we are well positioned to benefit from the increased water investment. As we prepare for the AMP8 cycle beginning in April 2025, we have secured long-term frameworks with Dŵr Cymru Welsh Water ("DCWW"), Northumbrian Water, Thames Water and new client South West Water. We've also agreed extensions to major frameworks with South East Water, Thames Water and DCWW and with a number of live tenders ongoing, we expect to start AMP8 in a stronger position with new clients and frameworks across a greater geographical area.

Our Water regions



Water companies' proposed investment

£96bn

AMP8 (2025–2030)

Water companies plan a

£10.2bn¹⁵

investment in Combined Sewer Overflows by 2030



Specialist Restoration and Remediation

Capabilities

- Soil and groundwater remediation
- Design of bespoke remediation and ground engineering solutions
- Specialist restoration and conservation

Our markets

In Land Remediation, we continue to see long-term demand for our services as part of the green infrastructure agenda. In Specialist Restoration, our work at Edinburgh Botanical Gardens to develop the Glasshouses is progressing well and we recently secured a programme of work associated with the restoration of a listed cast iron gasholder in Bethnal Green.

AmcoGiffen

Empowering connectivity through sustainable infrastructure.

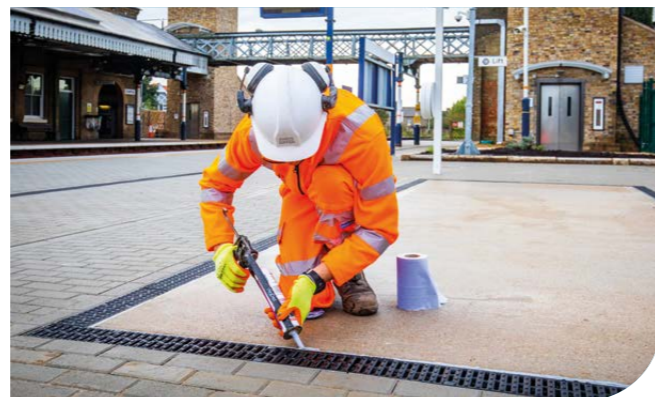
AMCO GIFFEN

AmcoGiffen is a leading partner in the design and delivery of innovative and complex multi disciplinary engineering, construction and maintenance services for the transport, energy and environmental sectors.

From inception to completion and ongoing maintenance, we provide certainty and confidence for our clients, delivering efficient and innovative solutions, safeguarding communities and the environment.

Our people make the difference. Their expertise and commitment provide consistent, quality driven service and their determination and tenacity drive growth and diversity through long-term customer relationships.

Our extensive capabilities deliver unparalleled solutions, tailored to specific needs, with national coverage backed by local strength ensuring we provide agile and responsive delivery across the UK.



Sectors and capabilities

Sector expertise

- Rail
- Environmental
- Highways
- Thermal Power
- Nuclear

Key capabilities

- Asset management
- Design
- Civil engineering
- Maintenance and renewals
- Buildings and stations
- Structures
- Tunnels
- Steel fabrication
- Electrical and plant
- Mechanical and electrical





QTS Group

One of the country's leading railway contractors providing specialist services in a variety of disciplines. With UK-wide reach we're able to provide efficient, high-quality work no matter the remit.

QTS REL

QTS is a pioneering leader in rail infrastructure, electrification and design and prides itself on being one of the leading innovators in the development of bespoke rail plant machinery.

QTS was founded in 1992 by Chairman Alan McLeish following a £300 loan from his mother. Now, after more than 30 years in business, QTS has grown to employ over 700 people across the UK and works as a tier one contractor for Network Rail.

As an accredited Principal Contractor Licence ("PCL") holder and Rail Plant Operator (Plant Operations Scheme) to Network Rail, QTS is fully certified to work on rail infrastructure throughout the UK. With national coverage, QTS is not only Scotland's largest framework contractor in rail vegetation management, fencing and earthworks, but we are also the largest rail fencing contractor in the UK.

QTS is committed to helping diversify the rail industry through its involvement in Women in Rail. Our Rail Skills Academy is leading the way for the development of new rail operatives for both QTS and our industry partners.

We are passionate about helping to develop young people and are the only rail business to hold the Investors in Young People platinum accreditation.

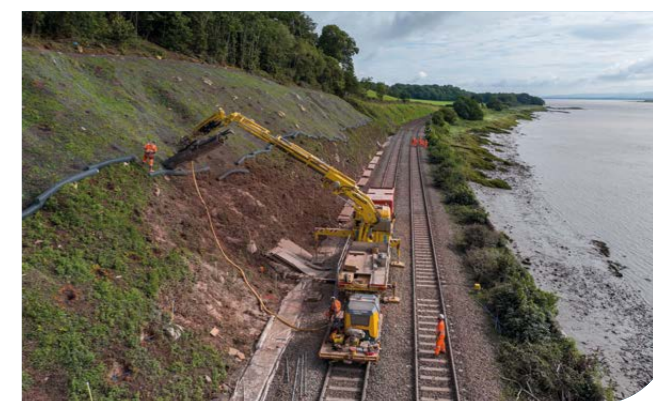
Sector and capabilities

Sector expertise

- Rail

Key capabilities

- Civil engineering
- Overhead Line Equipment
- Power distribution
- Vegetation management
- Drainage and track cleaning
- Fencing
- Geotechnical
- Specialist rope access
- Specialist plant
- Training



Carnell

A highways specialist that has built a reputation for innovation. The breadth and depth of our operations and the knowledge of our people led to National Highways nominating us as a “strategic supplier”.

Carnell

Carnell has built a strong and trusted reputation over three-decades of delivering highways and infrastructure projects with an emphasis on safety, quality and efficiency.

Along this journey, we have introduced several award-winning innovations, some of which have revolutionised the industry’s approach, while others have kept us one step ahead of the competition through collaboration with the client and continuous improvement.

Our focus has always been on the self-delivery of maintenance and improvement schemes across the UK’s strategic road network. We have long-term framework contracts in place with National Highways as delivery partners for general civil engineering, specialist drainage, technical surveys and technology.

More recently we have brought these strengths to new markets, by signing framework contracts with the Environment Agency and several local authorities. Our experience and expertise working in safety-critical environments will add value for these clients, while diversifying our portfolio of work.

In April 2024, Carnell acquired Route One Infrastructure, an established bridge and structures specialist. The acquisition increases our capabilities to include the maintenance of bridge expansion joints, waterproofing systems, bearings, concrete repairs and cathodic protection.



Sector and capabilities

Sector expertise

- Highways
- Flood and coastal

Key capabilities

- Civil engineering
- Technology and lighting
- Drainage survey and remediation
- Filter drain recycling
- Safety barrier & fencing
- SafetyCam solutions
- Highway technology
- Lighting
- Bridges and structures maintenance
- Waterproofing, joints and bearings
- Flood alleviation works



Clarke Telecom

Experts in connecting people through hardware, data, systems and technology.



Clarke Telecom provides specialist technical services to all four of the UK's major mobile network operators and has utilised this expertise in high-volume distributed networks to expand its services into the roll out of EV charging and private data infrastructure.

Communication networks

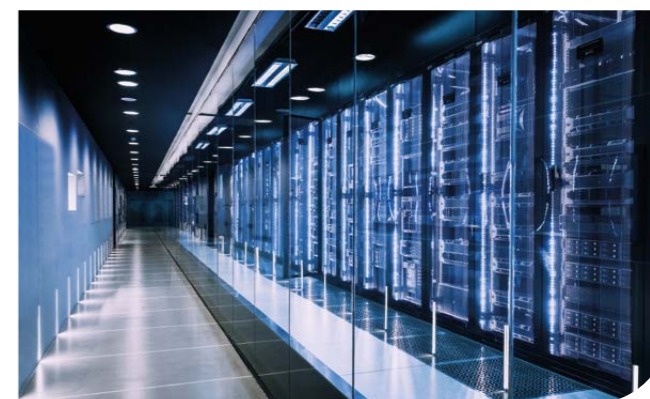
We have had involvement in every UK cellular network rollout; our experience in installing and maintaining critical mobile telecommunications infrastructure has resulted in a reputation for an exceptional and trusted service. Clarke Telecom is integral to the deployment of 4G and 5G technology by all of the UK networks.

EV infrastructure

Clarke EV is an Independent Connections Provider ("ICP") through the National Electricity Registration Scheme ("NERS"). With national coverage, our dedicated EV team carries out all stages of the process from concept to delivery which includes surveys, design to install, commissioning and maintenance. We add value to our client's projects by designing robust turnkey solutions.

Data infrastructure

Clarke Connect brings our expertise from the telecoms infrastructure to data-centric solutions. Our core business activities of acquire, design, construct, install, commission, integrate and maintain are now being delivered to the integrated Internet of Things, private 5G, small cell, data centre and edge computing applications.



Sector and capabilities

Sector expertise

- Wireless telecoms
- EV infrastructure

Key capabilities

- Acquisition and planning
- Design
- Small cells
- Civil construction
- Rigging, microwave and I,C&I
- Maintenance and decommissioning
- Digital outdoor media
- EV charging
- New electrical connections
- Data infrastructure

Shepley Engineers

Shepley Engineers is a major multidisciplinary contractor and project manager based in Cumbria and operating across the UK.



Shepley Engineers Ltd

Shepley has a deep, long-standing experience of the nuclear and restoration sectors.

Our 700-strong, directly employed specialist workforce provides decommissioning, manufacturing mechanical and electrical engineering support to some of the highest hazard nuclear facilities in the UK. Our team brings a wealth of expertise and over 75 years of nuclear experience at Sellafield.

Shepley has recently expanded through the acquisition of TIS, a nuclear manufacturing specialist, doubling its capacity to better support our reach into additional nuclear opportunities across the UK.

We offer a wide range of services, from engineering support to nuclear grade fabrication and machining, multidisciplinary MEICA installation and commissioning. We deliver complex projects in challenging environments and are committed to delivering safe, sustainable solutions to engineering challenges, operating to the highest levels of safety and quality.

We also operate in the restoration market, bringing our expertise in mechanical engineering and steel manufacture the repair of historic landmark buildings, including the Palace of Westminster estate.

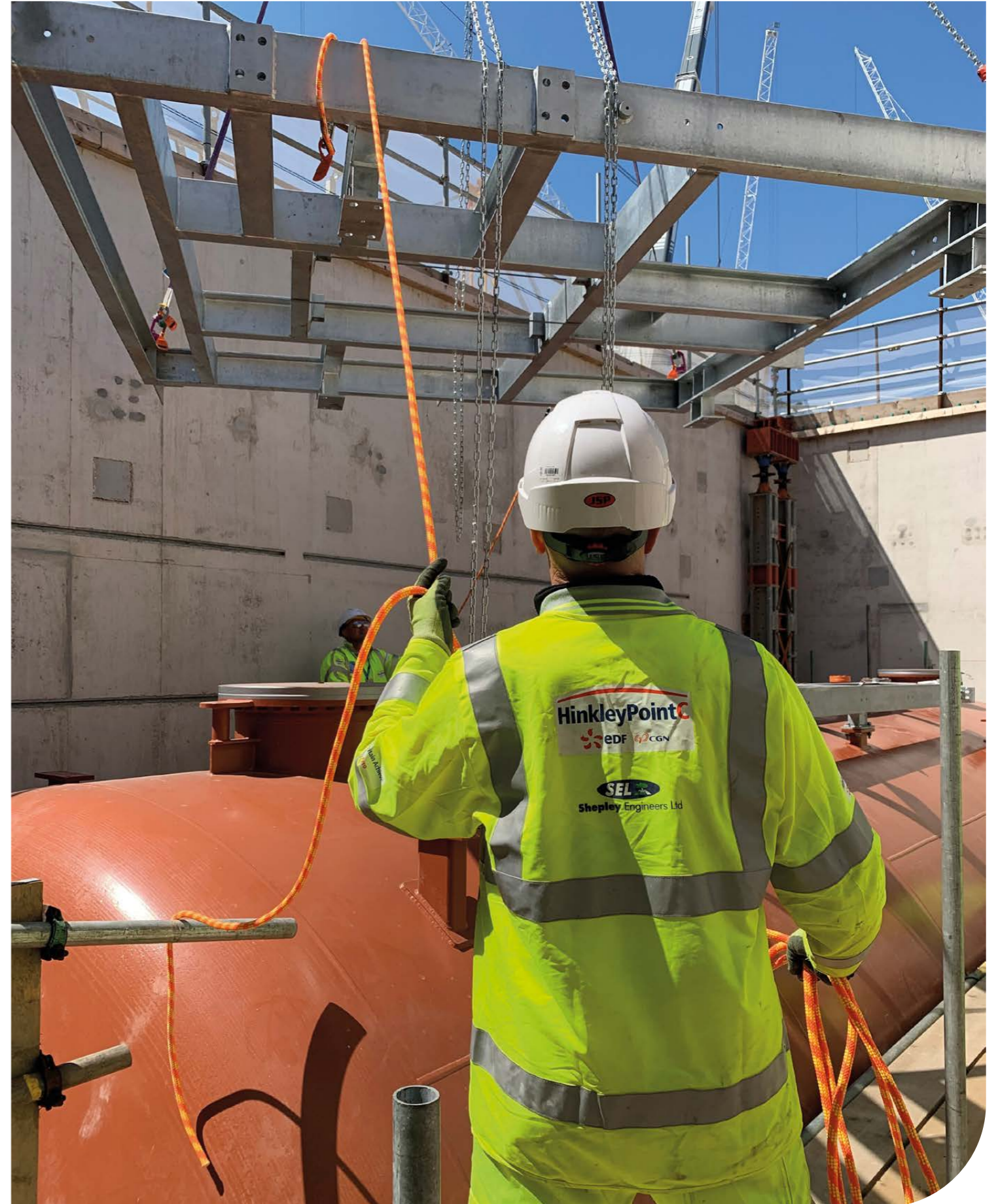
Sectors and capabilities

Sector expertise

- Nuclear
- Restoration

Key capabilities

- Nuclear decontamination, demolition and decommissioning
- Nuclear operational support and asset care
- Mechanical / electrical supply and installation
- Commissioning
- HVAC manufacture and installation
- High-integrity manufacture and fabrication
- Precision machining
- Inspection
- Panel manufacture
- Plant service equipment maintenance
- Specialist restoration and renovation



Browne

Through a deep understanding of our clients' networks, infrastructure and geography, we deliver a quality service, care for our local environment, and send our people home safe and well every day.



Browne is a water focused utility contractor based in North London.

We operate throughout London and the South East for clients such as Thames Water, Southern Water, Affinity Water, South East Water, Anglian Water and Northumbrian Water (Essex & Suffolk). We deliver multi disciplined water and wastewater and treatment facilities, as well as infrastructure services to the developer market.

We have built long-term relationships with our clients by collaboratively working with them to deliver an excellent service and achieve their business requirements. Browne uses innovative in-house digital applications which provide real-time management information and operational support, enabling agile production.

With the acquisition of Enisca in November 2022 we expanded our offering to include MEICA services, including non-infrastructure design and delivery enabling us to provide a full turnkey solution, from optioneering and design, through construction, commissioning and handover, to aftercare and maintenance.

We also design and manufacture motor control centre panels in our facility in Cookstown, Northern Ireland, and provide a full suite of system integration services.

Sectors and capabilities

Sector expertise

- Water

Key capabilities

- Clean water infrastructure and non-infrastructure
- Wastewater infrastructure and non-infrastructure
- Pipeline maintenance and rehabilitation
- Capital scheme delivery
- Renewable infrastructure
- Network design and modelling
- Mechanical, electrical, instrumentation and control automation ("MEICA") design and build
- Manufacture of MCCs and system integration
- Asset optimisation



Envolve Infrastructure

With an experienced specialist direct delivery workforce and unrivalled track record, we deliver on long-term frameworks and build relationships which thrive on collaboration and innovation.



Initially specialising in deep clean and wastewater pipelines, our expertise and collaborative approach organically developed the business into a strategic partner of choice.

We surpass expectations on every project. We don't just deliver, we excel. Our passion for our work means we naturally go the extra mile. Our focus is always on long-term partnerships and genuine collaboration; this is how we measure our success. We hold ourselves accountable to our exceptional standards and continue to innovate so we remain ahead of the game.

With an experienced specialist direct delivery workforce and unrivalled track record, we deliver on long-term frameworks and build relationships which thrive on collaboration and innovation.

When we work together, you become a part of our team. We work side by side with people, and we're involved in and passionate about their work. We don't measure success in numbers alone; we measure it in the relationships we've built. Our focus is always on long-term partnerships and genuine collaboration.

In our service and culture, we make sure we're the best. We're proud of our track record, but it's our constant investment in people and training that keeps us at the forefront of our industry. We're dynamic, we evolve with the times, and we maintain our unrivalled knowledge and craftsmanship.

In our service, culture and heritage, we make sure we're the best.

Sector and capabilities

Sector expertise

- Water
- Rail
- Highways
- Power

Key capabilities

- Heavy civil engineering
- Trenchless technology
- Clean and wastewater treatment
- Dam safety
- Clean water pipelines
- Specialist engineering to sub-stations and control rooms
- Wastewater pipelines
- Reactive emergency "on-call" services
- Renovation
- Tunnelling and deep shafts





Seymour Civil Engineering

Specialising in the water industry and land remediation sectors from inception to delivery, our extensive knowledge allows us to bring innovation and best practices to other highly regulated sectors.



With over 40 years of experience, Seymour and VHE provide a comprehensive range of civil engineering, infrastructure and land remediation solutions.

Seymour has built a strong reputation for the delivery of water and wastewater infrastructure with expertise in mains renewal, treatment centres and network services. Through our strategic partnerships and long-term frameworks, we provide specialist infrastructure support improving water quality, operational efficiency and network resilience.

We also specialise in highways improvement projects, developing infrastructure to support our towns and cities. Utilising our direct delivery teams and in-house plant fleet we have delivered some of the largest and most complex highways schemes in the North of England, devising pioneering solutions to support modern living, ensuring our communities thrive.

Our success stems from attention to detail and a commitment to delivering beyond construction, positioning Seymour as a water specialist contractor for numerous frameworks across AMP cycles. Embracing a proud right-first-time culture has resulted in multi-award-winning results, celebrating not only our projects but also the investment in our people.

VHE has firmly established itself as an industry pioneer in all aspects of remediation, bioremediation and the specialist treatment of soil contamination. Our extensive experience means we are ideally positioned to support the increased need for the development of brownfield sites, delivering land remediation cost effectively and sustainably for our clients.



Sectors and capabilities

Sector expertise

- Water
- Highways
- Land remediation

Key capabilities

- Wastewater sewers
- Potable water mains
- Trenchless working
- Shafts, tanks and pumping stations
- Repair and maintenance
- Treatment
- Nature-based solutions
- Reservoir safety and maintenance
- Soil and groundwater remediation
- Bioremediation and soil stabilisation
- Coastal protection and flood defence
- Waste classification and management

Leveraging organic growth through collaboration



AmcoGiffen / REL / QTS

Electrification ("OLE") combined with existing rail skills positions the business strongly for decarbonisation opportunities



Envolve / QTS

Successfully awarded fencing framework with Welsh Water ("DCWW")



Seymour / Browne / Envolve

Collaboration between our water subsidiaries on AMP8 procurement strategies



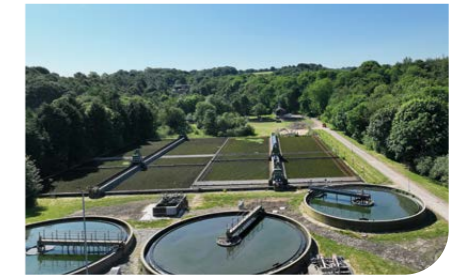
AmcoGiffen / Carnell

Collaboration between AmcoGiffen and Carnell resulting in award of Road Restraint System framework for National Highways



Enisca / Browne

Collaborative opportunities with South East Water and Essex & Suffolk (Northumbrian)



Enisca / Seymour / Envolve

Collaborating on water schemes for Yorkshire Water and Welsh Water



Clarke Telecom / QTS

Collaborating to deliver for communities poorly served by Wireless Telecoms



Clarke EV / AmcoGiffen

Delivering EV charging infrastructure to Network Rail sites



Shepley / Walter Lilly

Collaborating on opportunities in historic building restoration including at the Palace of Westminster Estate



The Renew Resilience Plan

Our purpose-led approach to ESG is based on our four commitments. These ensure we continue to align our business with the environmental, social and governance requirements of our stakeholders.

Create long-standing customer value

To achieve our purpose to:



Made possible through:

Unique collaboration

Our commitment to the UN Sustainable Development Goals

The 17 Sustainable Development Goals ("SDGs"), launched in 2015 with the 2030 Agenda for Sustainable Development, provide a shared blueprint for tackling some of the planet's most pressing issues and will help create a better place in which we can all live.



8 Decent Work and Economic Growth
Promote sustained, inclusive and sustainable economic growth, full and productive employment and decent work for all.



9 Industry, Innovation and Infrastructure
Build resilient infrastructure, promote inclusive and sustainable industrialisation and foster innovation.



12 Responsible Consumption and Production
Ensure sustainable consumption and production patterns.



13 Climate Action
Ensure sustainable consumption and production patterns.



Take climate action

- Increase use of energy from "green" tariffs
- Improvements in electric and hybrid company car options
- Move our commercial fleet to low carbon

Our targets

- 100% of energy we use will be derived from "green" energy tariffs
- Gas oil reduction ratio
- 80% of our commercial fleet will be low carbon by 2030



Operate responsibly

- Reduce our Lost Time Incident Frequency Rate ("LTIFR")
- Mandatory waste broker
- Reduce the amount of waste sent to landfill
- Improve our gender pay gap

Our targets

- 95% of eligible waste diverted from landfill
- 0 Lost Time Incident Frequency Rate ("LTIFR")



Build social value

- Commitment to community projects
- Focus on STEM engagement within our communities

Our targets

- One working day per employee assisting community projects (hours)
- 50 STEM events supported



Empower our people

- Improve the rate of response to our employee surveys
- Increase the number of mental health first aiders
- Continuous focus on employee development

Our targets

- 70% employee survey response rate
- 1:20 mental health first aiders
- 4.5 training days per employee



Our engineering services subsidiary businesses



AMCO GIFFEN



Clarke
Telecom



envolve
Infrastructure



QTS



seymour
civil engineering



SEL
Shepley Engineers Ltd



VHE



Carnell



enisca



BROWNE

Working together

Engineering infrastructure
for a sustainable future

References

1. HM Treasury, Spring Budget 2024 – March 2024
2. Network Rail - Our targets for CP6 – May 2023, www.networkrail.co.uk
3. Network Rail Strategic Business Plan, Control Period 7 – 19 May 2023
4. Network Rail Strategic Business Plan, Control Period 7 – 19 May 2023, page 7
5. National Highways Strategic Road Network Initial Report 2025–2030
6. The Investment Gap to Full 5G Rollout – Frontier Economics – September 2022
7. Vodafone UK Press Release 14 June 2023, www.vodafone.co.uk
8. Sellafeld Ltd DNWP PIN, www.find-tender.service.gov.uk/Notice/008694-2023
9. NDA Business Plan 2023/2024, www.gov.uk
10. UK invests in high-tech nuclear fuel, www.gov.uk – 8 May 2025
11. Press release 3 April 2023: www.gov.uk/government/news/shapps-sets-out-plans-to-drive-multi-billion-pound-investment-in-energy-revolution
12. Taking charge: the electric vehicle infrastructure strategy, www.gov.uk – 25 March 2022
13. Water UK, Transformative £96bn investment – 8 February 2024
14. Floods investment programme, www.gov.uk – 25 March 2024
15. National Storm Overflows Plan – Water UK, www.water.org.uk/overflows-plan

Disclaimer

No representation or warranty, expressed or implied, is made or given by or on behalf of Renew Holdings plc (the "Company") or any of its Directors or any other person as to the accuracy, completeness or fairness of the information contained in this brochure and no responsibility or liability is accepted for any such information. This brochure does not constitute an offer of securities by the Company and no investment decision or transaction in the securities of the Company should be made on the basis of the information contained in this brochure. The brochure contains certain information (for example, financial information and internal trading data) which the Company's management believes may assist in understanding the performance of the Renew Holdings plc group (the "Group"). However, none of the information in the brochure has been audited. Further, this brochure may include or imply statements or information that are, or may be deemed to be, "forward-looking statements". These forward looking statements may use forward-looking terminology, including the terms "believes", "estimates", "anticipates", "expects", "intends", "may", "will" or "should". By their nature, forward looking statements involve risks and uncertainties and recipients are cautioned that any such forward-looking statements are not guarantees of future performance. The Company's and the Group's actual results and performance may differ materially from the impression created by the forward-looking statements or any other information in this brochure. The Company undertakes no obligation to update or revise any information contained in this brochure, except as may be required by applicable law and regulation. Nothing in this brochure is intended to be, or intended to be construed as, a profit forecast or a guide as to the performance, financial or otherwise, of the Company or the Group whether in the current or any future financial year. This brochure and its contents are confidential and should not be distributed, published or reproduced (in whole or in part) or disclosed by recipients to any other person.



Renew Holdings plc

3175 Century Way
Thorpe Park
Leeds
LS15 8ZB
tel: 0113 281 4200
fax: 0113 281 4210
web: www.renewholdings.com

Company Number: 650447
Registered in England & Wales